



PRO
HUNTER

::
2525

OPERATING GUIDE
PLEASE READ THIS ENTIRE GUIDE BEFORE BEGINNING

IMPORTANT SAFETY INFORMATION

Explanation of Attention Words and Symbols used in this guide



⚠ WARNING

WARNING indicates a hazardous situation which, if not avoided, could result in death or serious injury.

CAUTION

⚠ WARNING

- Not for use with aggressive dogs. Do not use this product if your dog is aggressive, or if your dog is prone to aggressive behavior. Aggressive dogs can cause severe injury and even death to their owner and others. If you are unsure whether this product is appropriate for your dog, please consult your veterinarian or a certified trainer.
- This device contains Lithium-Ion (Li-Ion) batteries; never incinerate, puncture, deform, short-circuit, or charge with an inappropriate charger. Fire, explosion, property damage, or bodily harm may occur if this warning is not followed.
- Risk of explosion if battery is replaced by an incorrect type. Dispose of used batteries according to the instructions.

CAUTION

Thank you for choosing SportDOG Brand.® Used properly, this product will help you train your dog efficiently and safely. To ensure your satisfaction, please review this owner’s manual thoroughly. If you have questions regarding this product’s operation, please see this manual’s Frequently Asked Questions or Troubleshooting section, contact our Customer Care Center at 1-800-732-0144, or visit our website at www.sportdog.com.

To get the most protection out of your warranty, please register your product within 30 days at www.sportdog.com. By registering, and keeping your receipt you will enjoy the product’s full warranty and should you ever need to call the Customer Care Center, we will be able to help you faster. Most importantly, SportDOG™ will never give or sell your valuable information to anyone. Complete warranty information is available online at www.sportdog.com.

TABLE OF CONTENTS

COMPONENTS	5
HOW THE SYSTEM WORKS.....	5
KEY DEFINITIONS.....	6
PREPARE THE REMOTE TRANSMITTER.....	7
PREPARE THE COLLAR RECEIVER.....	8
FIT THE COLLAR RECEIVER	10
FIND THE BEST INTENSITY LEVEL FOR YOUR DOG.....	11
CHANGING STIMULATION RANGES	11
GENERAL TRAINING TIPS	12
PROGRAM THE REMOTE TRANSMITTER	13
MATCH THE COLLAR RECEIVER AND REMOTE TRANSMITTER.....	18
PROGRAM THE SYSTEM FOR TWO-DOG OPERATION	19
PROGRAM THE SYSTEM FOR THREE - SIX-DOG OPERATION.....	19
ACCESSORIES	20
FREQUENTLY ASKED QUESTIONS.....	21
TROUBLESHOOTING	22
TEST LIGHT INSTRUCTIONS.....	23
TERMS OF USE AND LIMITATION OF LIABILITY	23
FCC COMPLIANCE	24
BATTERY DISPOSAL.....	25
SPORTDOG™ ADD-A-DOG® RECEIVERS	28



HOW THE SYSTEM WORKS

The SportDOG™ PROHUNTER® 2525 has been proven safe, comfortable and effective for all dogs over 8 pounds. Consistent, correct use of this product allows you to reinforce commands and correct misbehavior from up to two miles. The Remote Transmitter sends a signal, activating the Collar Receiver to deliver a harmless stimulation. With proper training, a dog will learn to associate this signal with a command. Like all SportDOG products, this model features adjustable stimulation levels so you can tailor the stimulation level to your dog's temperament, eliminating the risk of over-correction.

IMPORTANT: THE PROHUNTER 2525 HAS A RANGE OF UP TO TWO MILES. DEPENDING ON THE WAY YOU HOLD THE REMOTE TRANSMITTER, THE MAXIMUM RANGE MAY VARY. FOR CONSISTENT RESULTS AT LONGER RANGES, HOLD THE REMOTE TRANSMITTER IN A VERTICAL POSITION AWAY FROM YOUR BODY AND ABOVE YOUR HEAD. TERRAIN, WEATHER, VEGETATION, TRANSMISSION FROM OTHER RADIO DEVICES, AND OTHER FACTORS WILL AFFECT THE MAXIMUM RANGE.



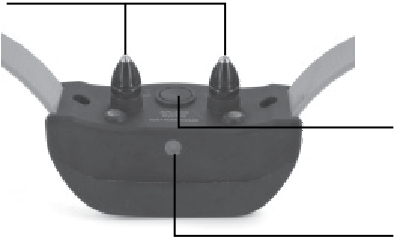
⚠ WARNING Do not use this product if your dog is aggressive, or if your dog is prone to aggressive behavior. Aggressive dogs can cause severe injury and even death to their owner and others. If you are unsure whether this product is appropriate for your dog, please consult your veterinarian or a certified trainer.

KEY DEFINITIONS

REMOTE TRANSMITTER



COLLAR RECEIVER

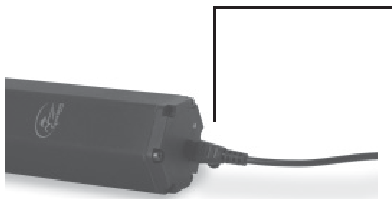


STEP :: 01

PREPARE THE REMOTE TRANSMITTER

CHARGE THE REMOTE TRANSMITTER

1. Lift the rubber cover protecting the Charging Jack.
2. Connect the charger connector to the Charging Jack.
3. Plug the charger into a standard 120/240-volt AC wall outlet.
4. Charge the Remote Transmitter for 2 hours for the first charge and every charge thereafter.



Using Li-Ion technology, the Remote Transmitter only requires a 2 hour charge. It is not harmful to let the unit charge for more than 2 hours.

5. When charging is complete, replace the rubber cover.

*NOTE: Approximate battery life between charges is 40 to 60 hours, depending on frequency of use. The Remote Transmitter is factory set to mode 1 in the toggle **up** position (see page 14).*

TRANSMITTER INDICATOR LIGHT

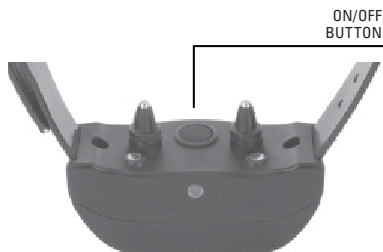
OPERATIONAL MODE	LIGHT COLOR	BATTERY STATUS	LIGHT FUNCTION
Continuous stimulation or Tone only button pressed	Green	Good	Light is solid in color while button is pressed
Continuous stimulation or Tone only button pressed	Red	Low	Light is solid in color while button is pressed
Momentary stimulation button pressed	Green	Good	Light flashes once and turns off
Momentary stimulation button pressed	Red	Low	Light flashes once and turns off
Unit is charging	Red	Low	Light is solid in color while charging
Unit is fully charged (charger still connected)	Green	Good	Light is solid in color once the battery is fully charged

PREPARE THE COLLAR RECEIVER

CHARGE THE COLLAR RECEIVER



OPERATIONAL MODE	LIGHT COLOR	LIGHT FUNCTION
No Collar Receiver on the Charging Cradle but charger is connected	Green	Light is solid in color
Unit is charging	Red	Light is solid in color while charging
Unit is fully charged (Collar Receiver on Charging Cradle)	Green	Light flashes once per second once the battery is fully charged



RECEIVER INDICATOR LIGHT

OPERATIONAL MODE	LIGHT COLOR	LIGHT FUNCTION	BATTERY STATUS	SPEAKER FUNCTION	VIBRATION
Unit is turned on via On/Off Button	Green	Light is solid in color during beep sequence	Good	Beeps 1-3 times depending on stimulation range setting (2 is the default setting). Please see page 11.	N/A
Unit is turned on via On/Off Button	Red	Light is solid in color during beep sequence	Low		
Unit is turned off via On/Off Button	Red	Light is solid in color during beep sequence	N/A	Beeps for 2 seconds	N/A
Unit is on	Green	Light flashes every 2 seconds	Good	N/A	N/A
Unit is on	Red	Light flashes every 2 seconds	Low	N/A	N/A
Unit is delivering continuous stimulation	Red	Light is solid in color for as long as button is pressed	N/A	N/A	N/A
Unit is delivering momentary stimulation	Red	Light will quickly flash once no matter how long button is pressed	N/A	N/A	N/A
Unit is delivering tone	Off	N/A	N/A	Unit will beep for as long as button is pressed	N/A
Unit is delivering vibration	Off	N/A	N/A	N/A	Unit will vibrate for as long as button is pressed

RECHARGEABLE BATTERIES

▲WARNING

- This device contains Lithium-Ion (Li-Ion) batteries; never incinerate, puncture, deform, short-circuit, or charge with an inappropriate charger. Fire, explosion, property damage, or bodily harm may occur if this warning is not followed.
- Risk of explosion if battery is replaced by an incorrect type. Dispose of used batteries according to the instructions (page 25).
- Batteries should never be removed from the battery compartment for charging.
- Risk of explosion if batteries are charged in areas with high temperature (100° F+).
- The rechargeable Lithium Ion (Li-Ion) batteries are not memory sensitive, do not require depletion before charging and cannot be over charged.
- The batteries come partially charged from the factory, but will require a full charge before the first use.
- **When storing the unit for long periods, remember to regularly give batteries a full charge. This should be done once every 3 to 4 months.**
- You should expect hundreds of recharge cycles from your batteries. However, all rechargeable batteries lose capacity over time relative to the number of recharge cycles they experience. This is normal. If your operating time drops to half of the original life, contact the Customer Care Center to purchase a new battery.

- The batteries should last for a period of 3-5 years. When a battery needs replacement, you can order a new pack by calling our Customer Care Center at 1-800-732-0144. Please do not open the Collar Receiver or Remote Transmitter until you have received the replacement.

FIT THE COLLAR RECEIVER

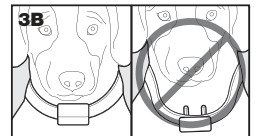
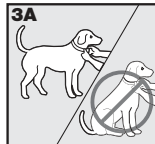
IMPORTANT: The proper fit and placement of the Collar Receiver is important for effective training. The Contact Points must have direct contact with your dog's skin.

CAUTION Please read and follow the instructions in this manual. Proper fit of the collar is important. A collar worn for too long, or made too tight on the dog's neck may cause skin damage. This is called bed sores; it is also called decubitus ulcers or pressure necrosis.

- Avoid leaving the collar on the dog for more than 12 hours per day.
- When possible, reposition the collar on the dog's neck every 1 to 2 hours.
- Check the fit to prevent excessive pressure; follow the instructions in this manual.
- Never connect a lead to the electronic collar; it will cause excessive pressure on the contacts.
- When using a separate collar for a lead, don't put pressure on the electronic collar.
- Wash the dog's neck area and the contacts of the collar weekly with a damp cloth.
- Examine the contact area daily for signs of a rash or a sore.
- If a rash or sore is found, discontinue use of the collar until the skin has healed.
- If the condition persists beyond 48 hours, see your veterinarian.

For additional information on bed sores and pressure necrosis, please visit the FAQ section for remote trainers at www.sportdog.com.

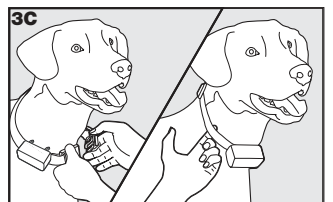
These steps will help keep your dog safe and comfortable. Millions of dogs are comfortable while they wear stainless steel contacts. Some dogs are sensitive to contact pressure. You may find after some time that your dog is very tolerant of the collar. If so, you may relax some of these precautions. It is important to continue daily checks of the contact area. If redness or sores are found, discontinue use until the skin has fully healed.



the hair around the Contact Points or switch to the longer Contact Points included with your system.

CAUTION

- You may need to trim the hair in the area of the Contact Points. Never shave the dog's neck; this may lead to a rash or infection.
- You should not make the collar any more tight than is required for good contact. A collar that is too tight will increase the risk of pressure necrosis in the contact area.



FIND THE BEST INTENSITY LEVEL FOR YOUR DOG

The ProHunter® 2525 has multiple intensity levels. This allows you to choose the stimulation that is best for your dog.

NOTE: Always start at the lowest level and work your way up.

For training efficiency, it is important to find the right intensity level for your dog. This is called the Recognition Level, at which your dog looks around in curiosity, or flicks his ears.

FINDING YOUR DOG'S RECOGNITION LEVEL:

NOTE: Every dog is different and you cannot predict where your dog's Recognition Level will be. Watch closely for any slight change in behavior that tells you your dog is feeling the stimulation.

1. With the Collar Receiver turned on and properly fitted to your dog, set the Remote Transmitter's Intensity Dial at Level 1 and press a Continuous Stimulation Button for 1 to 2 seconds.
2. If your dog shows no reaction to Level 1, go to Level 2 and repeat the process.
3. YOUR DOG SHOULD NOT VOCALIZE OR PANIC WHEN RECEIVING STIMULATION. IF THIS HAPPENS, THE STIMULATION LEVEL IS TOO HIGH AND YOU NEED TO GO BACK TO THE PREVIOUS LEVEL AND REPEAT THE PROCESS OR MOVE TO A LOWER STIMULATION RANGE (SEE BELOW).
4. Once you find your dog's Recognition Level, this is the level you should use when you begin a training exercise.
5. If you have progressed to Level 9 while searching for your dog's Recognition Level and your dog continues to show no response, check to see if Collar Receiver is snug against your dog's neck. Then go back to Intensity Level 1 and repeat the process. If your dog still does not indicate he is feeling the stimulation, you have two options: you may either have to trim the hair beneath the Contact Points or switch to the longer Contact Points included in your system.

If after completing all of these steps your dog still does not indicate he is feeling the stimulation, please contact Customer Care Center at 1-800-732-0144.

CHANGING STIMULATION RANGES

The ProHunter® 2525 Collar Receiver comes with 3 stimulation ranges (low, medium and high). There are 9 stimulation levels within each range, with 1 being the lowest and 9 being the highest.

The default range setting is 2 or medium.

To change the range of stimulation, follow these steps:

1. Make sure your unit is off.
2. Then turn the unit on by pressing and releasing the on/off button.
3. After the Indicator Light turns off and within 5 seconds, press and hold the on/off button for 3 seconds.
4. The Collar Receiver will then beep once and the Indicator Light will flash orange. This indicates **Low** stimulation range. If **Medium** or **High** are desired, continue to hold the button until the number of beeps/orange flashes equals the desired stimulation range shown in the chart below.
5. Release the button once the desired range is selected; the Collar Receiver will turn off.
6. Turn the unit back on. It will then beep according to the stimulation range selected in Step 4.

	STIMULATION RANGE	DOG TEMPERAMENT
1 beep	Low	Mild
2 beeps	Medium	Moderate
3 beeps	High	Stubborn

GENERAL TRAINING TIPS

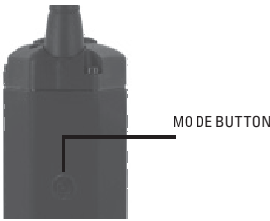
BEFORE TRAINING YOUR DOG WITH THIS PRODUCT:

You will have the most success using this remote trainer if you always remember to teach a command before trying to reinforce the command with a remote trainer. We recommend that you read the enclosed Training Guide and watch the enclosed DVD before training with this remote trainer. Your training will be easier and proceed faster if you follow the guidelines in these teaching assistants. In addition, always keep the following training tips in mind:

- Eliminate one misbehavior or teach one obedience command at a time. If you move too fast with the training, your dog may become confused.
- Be consistent. Give your dog a tone, vibration or stimulation with each misbehavior.
- Do not overcorrect your dog. Use as few stimulations as possible to train your dog.
- Restrict your dog from situations in which he has a history of misbehaving unless you can supervise him and use the ProHunter® 2525 for applying tone, vibration or stimulation.
- If you notice one situation in which your dog misbehaves repeatedly, set up this situation as a training session. This will dramatically increase your chances of success.
- If your dog has a timid reaction to the tone, vibration or stimulation (especially the first couple of times), do not be alarmed. Redirect his attention to a simple and appropriate behavior (i.e. a known command, such as “Sit”).
- Never use the ProHunter 2525 to correct or eliminate any form of aggressive behavior. If your dog exhibits such behavior, contact a professional trainer. Aggression in dogs is the result of many factors – it may be a learned behavior or it may be brought on as a result of fear. Another factor contributing to aggression in dogs is social dominance. Every dog is different.

At this point, your remote trainer is ready to use. The transmitter is factory set to mode 1 in the toggle **up** position, but you may wish to change the mode to fit your situation. See Step 5, for an explanation of mode options.

STEP :: 05



MODE Toggle switch in the UP position	TOP BUTTON FUNCTION	MIDDLE BUTTON FUNCTION	BOTTOM BUTTON FUNCTION
1*	Tone Only	Continuous MEDIUM stimulation (Level set by intensity dial) OR Vibe if V/T on Dial	Continuous LOW stimulation (Level set by intensity dial) OR Vibe if V/T on Dial
2	Vibration Only	Continuous MEDIUM stimulation (Level set by intensity dial) OR Tone if V/T on Dial	Continuous LOW stimulation (Level set by intensity dial) OR Tone if V/T on Dial
3	Dog 1	Dog 2	Dog 3
4	Dog 1	Dog 2	Dog 3
5	Dog 1/4 Continuous HIGH stimulation (Level set by intensity dial) OR Tone if V/T on Dial	Dog 2/5 Continuous HIGH stimulation (Level set by intensity dial) OR Tone if V/T on Dial	Dog 3/6 Continuous HIGH stimulation (Level set by intensity dial) OR Tone if V/T on Dial
6	Dog 1/4 Continuous HIGH stimulation (Level set by intensity dial) OR Vibe if V/T on Dial	Dog 2/5 Continuous HIGH stimulation (Level set by intensity dial) OR Vibe if V/T on Dial	Dog 3/6 Continuous HIGH stimulation (Level set by intensity dial) OR Vibe if V/T on Dial
7	Continuous HIGH stimulation (**Programmed level) OR Tone if V/T on Dial	Continuous MEDIUM stimulation (Level set by intensity dial) OR Tone if V/T on Dial	Continuous LOW stimulation (Level set by intensity dial) OR Tone if V/T on Dial
8	Dog 1	Dog 2	Dog 3
9 (ID CODE)	***See Right	N/A	N/A

MIDDLE + BOTTOM BUTTON FUNCTION	TOGGLE SWITCH FUNCTION UP/DOWN	# of Dogs
Continuous HIGH stimulation (Level set by intensity dial) OR Vibe if V/T on Dial	Dog 1/2	2
Continuous HIGH stimulation (Level set by intensity dial) OR Tone if V/T on Dial	Dog 1/2	2
N/A	UP: Continuous HIGH stimulation (Level set by intensity dial) OR Vibe if V/T on dial Down: Tone Only	3
N/A	UP: Continuous HIGH stimulation (Level set by intensity dial) OR Tone if V/T on dial Down: Vibe Only	3
N/A	Dog 1-3 / 4-6	6
N/A	Dog 1-3 / 4-6	6
Continuous HIGH Stimulation (Level set by intensity dial) OR Tone if V/T on Dial	Dog 1/2	2
N/A	UP: Continuous HIGH stimulation (Level set by intensity dial) OR Vibe if V/T on dial Down: N/A	3
N/A	UP	N/A

*Factory Default Mode

**Programmed Stimulation Level: When this mode is entered, the unit will enter level programming mode for 15 seconds (LED solid green in color) allowing you to set the desired stimulation level. While the LED is solid, the user can set the desired level using the intensity dial and save it by pressing the top button. The Transmitter Indicator Light will quickly flash acknowledging your selection. If no button is pressed within the 15 second window, the previous value will be used. If no level has ever been set then the unit will default to the maximum stimulation level.

***Program ID: An ID Code is the signal identification between the Remote Transmitter and Collar Receiver. You may want to change the ID Code if your Remote Transmitter is sending a signal to more than one Collar Receiver; or if you would like to set two or more Remote Transmitters to the same Collar Receiver, the ProHunter® 2525 offers you that flexibility.

Once mode 9 is selected, the transmitter will enter ID code selection for 15 seconds (LED solid green in color). If the mode is entered and no button pressed, the ID will revert back to the factory programmed ID. For detailed instructions on how to manually program one of 100 user ID codes, see page 18.

MODE Toggle switch in the DOWN position	TOP BUTTON FUNCTION	MIDDLE BUTTON FUNCTION	BOTTOM BUTTON FUNCTION
1	Tone Only	Momentary HIGH stimulation (Level set by intensity dial) OR Vibe if V/T on Dial	Momentary LOW stimulation (Level set by intensity dial) OR Vibe if V/T on Dial
2	Vibe Only	Momentary HIGH stimulation (Level set by intensity dial) OR Tone if V/T on Dial	Momentary LOW stimulation (Level set by intensity dial) OR Tone if V/T on Dial
3	N/A	Continuous MEDIUM stimulation (Level set by intensity dial) OR Vibe if V/T on Dial	Continuous LOW stimulation (Level set by intensity dial) OR Vibe if V/T on Dial
4	N/A	Continuous HIGH stimulation (Level set by intensity dial) OR Vibe if V/T on Dial	Tone Only
5	N/A	Continuous HIGH stimulation (Level set by intensity dial) OR Tone if V/T on Dial	Vibe Only
6	N/A	Dog 1	Dog 2
7	N/A	Dog 1	Dog 2
8	Tone Only	Continuous HIGH stimulation (Level set by intensity dial) OR Tone if V/T on Dial	Vibe Only
9	Tone Only	Momentary HIGH stimulation (Level set by intensity dial) OR Tone if V/T on Dial	Vibe Only

MIDDLE + BOTTOM BUTTON FUNCTION	TOGGLE SWITCH FUNCTION UP/DOWN	# of Dogs
Continuous HIGH stimulation (Level set by intensity dial) OR Vibe if V/T on Dial	Dog 1/2	2
Continuous HIGH stimulation (Level set by intensity dial) OR Tone if V/T on Dial	Dog 1/2	2
Continuous HIGH stimulation (Level set by intensity dial) OR Vibe if V/T on Dial	Dog 1/2	2
N/A	Dog 1/2	2
N/A	Dog 1-2	2
N/A	UP: Continuous HIGH stimulation (Level set by intensity dial) OR Vibe if V/T on dial Down: Tone Only	2
N/A	UP: Continuous HIGH stimulation (Level set by intensity dial) OR Tone if V/T on dial Down: Vibe Only	2
N/A	Dog 1/2	2
N/A	Dog 1/2	2

TO MANUALLY PROGRAM THE REMOTE TRANSMITTER'S ID CODE FOLLOW THESE STEPS:

1. Turn the intensity dial to level 9, flip the toggle switch up, and then press and release the mode button on the back of your Remote Transmitter. This does not change the mode, so the current mode will still be active after the ID change is complete.
2. Once the mode button is released, the green indicator light will illuminate and stay on for 15 seconds.
3. While the green light is on, turn the intensity dial to select the 1st digit of the ID, using 1-9, and then press and release the top button. The green light will flash rapidly confirming selection.
4. Again, while the green light is on, turn the intensity dial to select the 2nd digit of the ID, using 1-9, and then press and release the top button. The green light will flash rapidly confirming selection. The 2nd digit is optional, and if not desired, just wait until the green light turns off and refrain from pressing the top button.
5. At the end of 15 seconds, or after the second press of the top button, the green light will turn off and the ID of the unit will be updated. At this point, the unit will be in the same mode it was in prior to setting the ID.
6. Upon changing the ID Code, you will need to match the Collar Receiver to the Remote Transmitter. See Step 6 below.

NOTE: If you press the top button only once (skipping Step 4) the ID is still a two digit ID. The left digit is defaulted to 1. For example, if you selected 6 in Step 3 and pressed the button only once, the ID you get will be 16.

To return the unit to the factory ID follow these steps:

1. Turn the intensity dial to level 9, flip the toggle switch up, and then press and release the mode button on the back of your Remote Transmitter. This does not change the mode, so the current mode will still be active after the ID change is complete.
2. Do not press any buttons and wait until the green indicator light turns off.
3. You will now need to match the Collar Receiver to the Remote Transmitter. See Step 6 below.

STEP :: 06

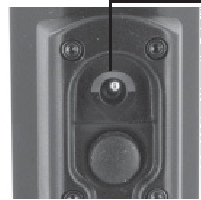
MATCH THE COLLAR RECEIVER AND REMOTE TRANSMITTER

To reset the Collar Receiver to work with a new Remote Transmitter or to reprogram a new Collar Receiver to work with your existing Remote Transmitter:

1. Flip the toggle switch on your Remote Transmitter to the **up** position.
2. Turn the Collar Receiver off.
3. Press and hold the On/Off Button. The Receiver Indicator Light will come on, then turn off after 4-5 seconds. If the On/Off Button is released too early, the Receiver Indicator Light will begin flashing as normal. If this occurs, start over and repeat from (2).
4. After the Receiver Indicator Light has turned off, release the On/Off Button.
5. Press and hold the Top Button on the Remote Transmitter until the Receiver Indicator Light flashes 5 times. You may need to hold both units 2-3 feet from each other before this occurs. Once the Receiver Indicator Light has flashed 5 times, the Collar Receiver has been reset and will begin flashing as normal. If the Receiver Indicator Light does not flash 5 times, start over and repeat from (1).

STEP :: 07

TOGGLE
SWITCH



- D. Press and hold the Top Button on the Remote Transmitter until the Receiver Indicator Light flashes 5 times. You may need to hold both units 2-3 feet from each other.
3. Program the second Collar Receiver the same way using **A** through **D** above, but with the toggle switch in the **down** position.

STEP :: 08

PROGRAM THE SYSTEM FOR THREE - SIX-DOG OPERATION

SportDOG™ Add-A-Dog® receivers must be purchased to train additional dogs.

Please refer to the back cover for compatible Add-A-Dog Collar Receivers for this system.

THREE DOG OPERATION

1. Making sure the toggle switch on your Remote Transmitter is in the **up** position, program the Remote Transmitter to mode 3, 4, 5, 6 or 8 (see pages 14-15).
2. Program the first Collar Receiver:
 - A.** Turn the Collar Receiver off.
 - B.** Press and hold the On/Off Button. The Receiver Indicator Light will come on, then turn off in 4-5 seconds. If the On/Off Button is released too early, the Receiver Indicator Light will begin its normal flashing. If this occurs, start over and repeat from **A**.
 - C.** After the Receiver Indicator Light has turned off, release the On/Off Button.
 - D.** Press and hold the **Top Button** on the Remote Transmitter until the Receiver Indicator Light flashes 5 times. You may need to hold both units 2-3 feet from each other. If the Receiver Indicator Light does not flash 5 times, start over and repeat from **A**.
3. Program the second Collar Receiver using **A** through **D** above, but using the **Middle Button** in place of the Top Button.
4. Program the third Collar Receiver using **A** through **D** above, but using the **Bottom Button** in place of the Middle Button.

SIX DOG OPERATION

Making sure the toggle switch on your Remote Transmitter is in the **up** position, program the Remote Transmitter to mode 5 or 6 (see pages 14-15).

For six dog operation repeat above steps 2-4 with the toggle switch in the **up** position for dogs 1, 2, and 3; then flip the toggle switch to the **down** position, and repeat above steps 2-4 for dogs 4, 5 and 6.

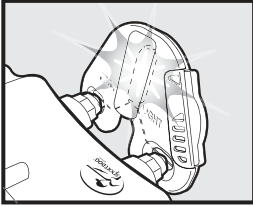
ACCESSORIES

To purchase additional accessories for your SportDOG Brand® ProHunter® 2525, contact the Customer Care Center at 1-800-732-0144 or visit our website at www.sportdog.com to locate a retailer near you.

Component	Part Number
¾" Black Collar Strap	SAC00-10816
¾" Blaze Orange Collar Strap	SAC00-10815
¾" Blue Collar Strap	SAC00-11921
¾" Red Collar Strap	SAC00-11820
¾" Yellow Collar Strap	SAC00-12795
¾" Green Collar Strap	SAC00-10817
¾" White Collar Strap	SAC00-12796
Collar Receiver (does not include collar strap)	SDT00-12490
Remote Transmitter Only	SDT00-13488
Antenna	SAC00-13513
Contact Points (Short)	SAC00-12571
Contact Points (Long)	SAC00-12570
Battery Kit (Collar Receiver)	SAC00-12544
Battery Kit (Remote Transmitter)	SAC00-13514
Adapter	SDT00-12272
Cradle	SAC00-12541

TROUBLESHOOTING

TEST LIGHT INSTRUCTIONS



1. Turn the Collar Receiver on.
2. Hold the Test Light Contacts to the Contact Points.
3. Press a Stimulation Button on the Remote Transmitter.
4. The Test Light will flash.
NOTE: At higher Stimulation Levels, the Test Light will flash brighter.
5. Turn the Collar Receiver off.

Save the Test Light for future testing.

NOTE: If the Test Light does not flash, recharge the battery and re-test. If the Test Light still does not flash, contact the Customer Care Center at 1-800-732-0144.

TERMS OF USE AND LIMITATION OF LIABILITY

1. TERMS OF USE

This Product is offered to you conditioned upon your acceptance without modification of the terms, conditions and notices contained herein. Usage of this Product implies acceptance of all such terms, conditions, and notices.

2. PROPER USE

This Product is designed for use with dogs where training is desired. The specific temperament of your dog may not work with this Product. We recommend that you not use this Product if your dog is less than 8 pounds or if your dog is aggressive. If you are unsure whether this is appropriate for your dog, please consult your veterinarian, certified trainer or contact our Customer Care Center at 1-800-732-0144.

Proper use includes reviewing the entire Operating and Training Guide provided with your Product and any specific Caution statements.

3. NO UNLAWFUL OR PROHIBITED USE

This Product is designed for use with dogs only. This dog training device is not intended to harm, injure, or provoke. Using this Product in a way that is not intended could result in violation of Federal, State or local laws.

4. LIMITATION OF LIABILITY

In no event shall Radio Systems® Corporation be liable for any direct, indirect, punitive, incidental, special or consequential damages, or any damages whatsoever arising out of or connected with the use or misuse of this Product. Buyer assumes all risks and liability from the use of this Product.

5. MODIFICATION OF TERMS AND CONDITIONS

Radio Systems Corporation reserves the right to change the terms, conditions and notices under which this Product is offered.

FCC COMPLIANCE

This device complies with part 15 of the FCC Rules. Operation is subject to the following two conditions: (1) This device may not cause harmful interference, and (2) this device must accept any interference received, including interference that may cause undesired operation.

This equipment has been tested and found to comply with the limits for a Class B digital device, pursuant to part 15 of the FCC Rules. These limits are designed to provide reasonable protection against harmful interference in a residential installation. This equipment generates, uses and can radiate radio frequency energy and, if not installed and used in accordance with the instructions, may cause harmful interference to radio communications. However, there is no guarantee that interference will not occur in a specific installation. If interference does occur to radio or television reception, which can be determined by turning the equipment off and on, the user is encouraged to try to correct the interference by one or more of the following measures:

- Reorient or relocate the receiving antenna.
- Increase the separation between the equipment and the receiver.
- Connect the equipment to an outlet on a circuit different from that to which the receiver is connected.
- Contact customer service or an experienced radio/TV technician for assistance.

Caution: Unauthorized changes or modifications to the equipment may violate FCC regulations and could void the user's authority to operate the equipment.

Under Industry Canada regulations, this radio transmitter may only operate using an antenna approved for the transmitter by Industry Canada. To reduce potential radio interference to other users, the antenna type and its gain should be so chosen that the equivalent isotropically radiated power (e.i.r.p.) is not more than that necessary for successful communication.

This radio transmitter IC: 2721A-3001131 has been approved by Industry Canada to operate with the antennas listed below. Antennas not included in this list are strictly prohibited for use with this device.

SportDOG Brand® antenna part number SAC00-13513.

This device complies with Industry Canada licence-exempt RSS standard(s). Operation is subject to the following two conditions: (1) this device may not cause interference, and (2) this device must accept any interference, including interference that may cause undesired operation of the device.



BATTERY DISPOSAL

▲ WARNING See important safety information on page 2 related to the battery.

This system operates on two Li-Ion battery packs (240mAh capacity for the Collar Receiver and 650mAh capacity for the Remote Transmitter). Only replace with battery received from calling the Customer Care Center at 1-800-732-0144.

Separate collection of spent batteries is required in many regions; check the regulations in your area before discarding spent batteries. Please see below for instructions on how to remove the battery from the product for separate disposal.

AT END OF PRODUCT LIFE, USE THESE BATTERY REMOVAL INSTRUCTIONS FOR FINAL DISPOSAL (DO NOT OPEN THE COLLAR RECEIVER OR REMOTE TRANSMITTER UNTIL YOU HAVE RECEIVED THE REPLACEMENT):

- Using a 5/64" hex key for your Remote Transmitter and/or a 3/32" Allen wrench for your Collar Receiver, remove the case screws.
- Remove the case back/cover from your Collar Receiver and/or the bottom cover from your Remote Transmitter.
- Remove the old battery pack. *NOTE: When removing the old battery pack, care must be taken when gripping the connector firmly to avoid damaging the wires. Shorting the battery wires may cause fire or explosion.*

NOTE: These instructions are not valid for repair or battery replacement. Replacing the battery with a battery not specifically approved by Radio Systems® Corporation may cause fire or explosion. Please call the Customer Care Center at 1-800-732-0144 to avoid invalidating your warranty.

This product is protected by the following patents:

U.S. Patent Numbers: 7,647,545; 7,017,524; 6,901,883; 6,184,790; 6,459,378; and D451,836.



**GEAR THE WAY
YOU'D DESIGN IT®**

SPORTDOG.COM

SPORTDOG / ADD-A-DOG®
Collar Receiver



SDR::A ADD-A-DOG®

OTHER COMPATIBLE COLLARS INCLUDE: SDR-AH & SDR-AW ADD-A-DOG®

NOTE: SDR-FS, SDR-FH, SDR, SDR-CH, SDR-FC, SDR-BEEP AND SDR-H ADD-A-DOG COLLARS ARE NOT COMPATIBLE WITH THIS SYSTEM.

©2011 RADIO SYSTEMS® CORPORATION
Radio Systems® Corporation • 10427 PetSafe Way • Knoxville, TN 37932 • 1-800-732-0144
J400-1295