

**PetSafe® Deluxe  
In-Ground Cat Fence™  
Receiver Collar  
Operating Guide**

**Please read this entire guide before beginning.**



Thank you for choosing PetSafe®, the best selling brand of electronic training solutions in the world. Our mission is to be the most trusted brand in the pet ownership experience. We want to ensure your pet's safety by providing you with the tools and techniques to successfully train your pet. If you have any questions, please contact the Customer Care Center at 1-800-732-2677 or visit our website at [www.petsafe.net](http://www.petsafe.net).

To get the most protection out of your limited warranty, please register your product within 90 days at [www.petsafe.net](http://www.petsafe.net). By registering, you will enjoy the product's full warranty and should you ever need to call the Customer Care Center, we will be able to help you faster. Additionally, you will not have to save your product receipt as registering serves as proof of purchase. Most importantly, PetSafe will never give or sell your valuable information to anyone.

---

## **How the System Works**

The PetSafe® Deluxe In-Ground Cat Fence™ has been proven safe, comfortable, and effective for cats over 6 lbs. and at least 6 months old. The system works by producing a radio signal from the Fence Transmitter through up to 4000 ft. of Boundary Wire. The Boundary Wire is buried or attached to a fixed object to enclose the Pet Area. You temporarily define this Pet Area with Boundary Flags for a visual aid in training your cat. Your cat wears a Receiver Collar with Contact Points that touch his neck and, once trained, is allowed to roam freely in the Pet Area. When your cat reaches the Warning Zone, the Receiver Collar gives a warning beep. If your cat continues into the Static Correction Zone, a safe Static Correction will be delivered through the Contact Points to get his attention until he returns to the Pet Area.

## Prepare the Receiver Collar

### To Insert and Remove the Battery

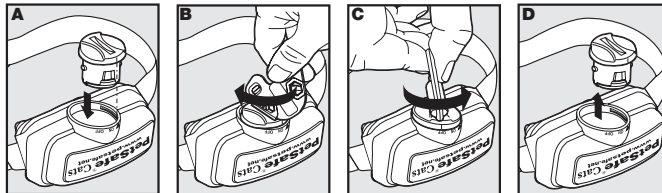
*Note: Do not install the battery while the Receiver Collar is on your pet.*

This Receiver Collar utilizes a replaceable PetSafe® battery (RFA-188). This unique battery is designed to make battery replacement easier and increase water protection.

To activate the collar, insert the battery module (A). Using the edge of the Test Light Tool as shown, turn the battery clockwise until the vertical line on the battery is pointed to the “ON” position (B). If the PetSafe Receiver Collar is not going to be used on the cat immediately, leave it in the “OFF” position.

To remove the battery, turn the battery counter-clockwise using the edge of the Test Light Tool as shown (C, D). DO NOT attempt to cut into or pry open the battery. Be sure to discard the used battery properly.

A replacement PetSafe battery can be found at many retailers. Contact the Customer Care Center at 1-800-732-2677 or visit our website at [www.petsafe.net](http://www.petsafe.net) to locate a retailer near you.



[www.petsafe.net](http://www.petsafe.net)

### Two Color LED

The two color LED indicator shows good or low battery. Good battery equals 1 flash every 60 seconds with Green LED. Low battery equals 3 flashes every 60 seconds with the Red LED. If there are no LED lights it is time to change the battery.

### To Set the Static Correction Level

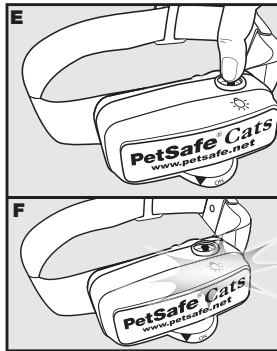
Read all steps before attempting to set the Static Correction Level.

1. With the battery installed, press the Correction Level Button and release when the Receiver Indicator Light lights red (E).
2. The Receiver Indicator Light will emit a number of red flashes representing the Static Correction Level (F).
3. Increase the Static Correction Level by pressing and releasing the Correction Level Button within 5 seconds of the previous flashes.

The Static Correction Levels increase from 1 to 5.

Pushing the Correction Level Button while the Receiver Collar is on level 5 will cause the Receiver Collar to revert to level 1. Refer to the Function and Response Table to choose the Static Correction level that best fits your pet. The Receiver Collar is equipped to automatically increase the level of Static Correction the longer your pet remains in the Static Correction Zone, if the collar is set at level 2 or above.

The Receiver Indicator Light acts as a low battery indicator, flashing every 60 seconds when battery replacement is required.



## Function and Response Table

Indicator Light Response	Static Correction Level	Receiver Collar Function	Temperament of Pet
1 Red Flash	1	No Static Correction, Tone Only	
2 Red Flashes	2	Low Static Correction	Timid
3 Red Flashes	3	Medium Static Correction	Timid or Average
4 Red Flashes	4	Medium High Static Correction	Average or High Energy
5 Red Flashes	5	High Static Correction	High Energy
Flashes 3 Red Flashes every 60 seconds	Low Battery		

## Fit the Receiver Collar

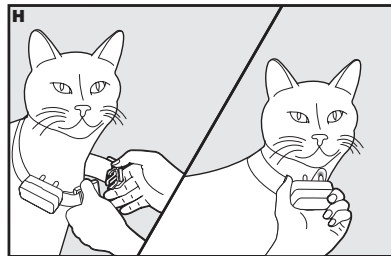
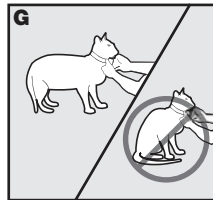
**Important: The proper fit and placement of your Receiver Collar is important for effective training. The Contact Points must have direct contact with your cat's skin on the underside of his neck.**

To assure a proper fit, please follow these steps:

1. Make sure that the batteries are not installed in the Receiver Collar.
2. Start with your cat standing comfortably (**G**).
3. Center the Contact Points underneath your cat's neck, touching the skin.

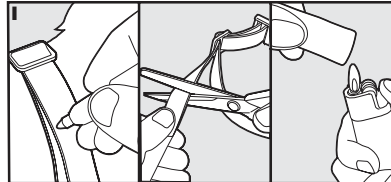
*Note: It is sometimes necessary to trim the hair around the Contact Points to make sure that contact is consistent.*

4. Check the tightness of the Receiver Collar by inserting one finger between the end of a Contact Point and your cat's neck. The fit should be snug but not constricting (**H**).
5. Allow your cat to wear the collar for several minutes then recheck the fit. Check the fit again as your cat becomes more comfortable with the Receiver Collar.



6. Trim the collar as follows (I):

- a. Mark the desired length of the Receiver Collar with a pen. Allow for growth if your cat is young or grows a thick winter coat.
- b. Remove the Receiver Collar from your cat and cut off the excess.
- c. Before placing the Receiver Collar back onto your cat, seal the edge of the cut collar by applying a flame along the frayed edge.

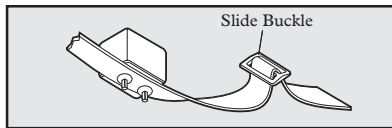


**Important: For comfort, safety and effectiveness of product, please ensure the following:**

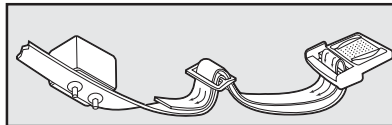
- **During the first 2 weeks of training, do not use the training device on your pet without direct supervision.**
- **Check the fit to prevent excessive pressure by being able to insert one finger between the Contact Point and your pet's skin.**
- **Your pet must be carefully examined daily for any signs of a rash or sore.**
- **If a rash or sore is observed, discontinue the use of the Receiver Collar for a few days.**
- **If the condition persists beyond 48 hours, see your veterinarian.**
- **Your pet's neck and the Contact Points must be washed weekly with a wash cloth and mild hand soap, then rinsed thoroughly.**

A condition called Pressure Necrosis, which is a devitalization of the skin due to excessive and prolonged contact against the Contact Points, may occur if the steps above are not followed.

### To Re-Thread the Collar



The slide buckle prevents the collar from becoming loose around your cat's neck.



If you need to take your cat out of the Pet Area, remove the Receiver Collar and leave it in the Pet Area.

## Training Guide

### Cat Training Introduction

*This training guide offers a choice of two training methods: On Lead Method and Supervised Tie Out Method. Both methods require close supervision of your cat throughout the training period. Carefully read both methods to determine which is right for you and your cat.*

### Be Patient With Your Cat

**Important:** Proper training of your cat is essential to the success of the PetSafe® Deluxe In-Ground Cat Fence™. Read this section completely before beginning to train your cat. Remember that the PetSafe Deluxe In-Ground Cat Fence is not a solid barrier.

- Training should be fair, firm and consistent.
- Train for 10 to 15 minutes at a time. Don't try to do too much too quickly. More-frequent short sessions are better than less-frequent longer sessions.
- If your cat shows signs of stress, slow down the training schedule and/or add additional days of training.
- Finish each training session with lots of praise and affection.
- Remove the Receiver Collar after each training session.
- Keep your cat on a harness attached to a lead during training sessions.
- Even if you think your cat is responding well to the training, complete the entire training. Reinforcement is important.
- Regularly check the fit of the Receiver Collar against your cat's skin.

## **Preparation**

Your goal is to train your cat to turn away from the Boundary Zone every time he hears the warning beep from the Receiver Collar.

During training, your cat must develop an understanding of the Boundary and that you require him to remain within it.

Cats are independent creatures. In order to gain the correct response, you must always work with a kind, calm and respectful manner. Gain your cat's trust and you will build a mutual respect which will ultimately lead to success.

It must be remembered that by their very nature cats are more agile and therefore more mobile than dogs. You must be very aware of your training environment. If it is possible for your cat to climb on a shed or up a tree, taking the Receiver Collar out of reach of the signal from the Boundary Wire, then it is possible that he could jump the Boundary without receiving a Static Correction.

The time scale for fully training your cat can range from one to two weeks. During the training period, you should be able to detect from your cat's response if it is time to move on to the next training phase.

---

## **Receiver Collar Familiarity**

### **Goal:**

To familiarize your cat with the Receiver Collar if he has not worn one before.

### **Steps:**

1. Fit the Receiver Collar as detailed on pages 6 and 7 of this guide, but without the battery inserted, so there is no chance of your cat receiving a correction at this early stage.

2. Reward your cat for allowing you to put on the Receiver Collar and leave him for a short period of time (5 - 15 minutes). Gradually increase the time your cat spends wearing the Receiver Collar to an hour or more.
3. Your cat is ready to move on to Training when you observe him behaving normally (e.g., grooming, eating, sleeping, showing affection) while wearing the Receiver Collar.

## **Training Guide - On Lead Method**

### **Days 1 thru 2 – Boundary Awareness - Warning Zone**

Perform three or four training sessions per day, each lasting 10 – 15 minutes.

**Important:**

- **Your cat MUST stay in a harness for training, to allow for any unpredictable response. The harness also gives you control to guide your cat to a “place of safety” within the Pet Area once warned or corrected by the Receiver Collar.**
- **If your cat attempts to leave the Pet Area, make sure he does not get past the Boundary Flags. Never let the cat past the Boundary Flags with or without the Receiver Collar on. If your cat thinks he can pass the Boundary Flags, training will take longer.**

**Goal:**

To teach your cat to associate the beep with the position of the Warning Zone.

**Steps:**

1. Set the Receiver Collar to Level 1 (tone only).

2. Put the harness and lead on your cat. Lead him into the Pet Area and up to a chosen point by the Boundary Flags.
  3. Holding the Receiver Collar near your cat's ears, lead him into the Warning Zone.
  4. As the beep sounds, urgently say "run away, run away" while pulling your cat on the harness into the Pet Area. Praise and give affection to your cat.
  5. Connect the response to the beep with the Boundary Flag response by carrying a spare Boundary Flag. Produce the Boundary Flag and wave it at the point the Receiver Collar starts to beep.
  6. Repeat the process at several different Boundary Flags.
  7. As you repeatedly lead your cat to the Boundary Flags and the warning beep sounds, you should notice some reluctance from him, and he should try to move away.
- 

## **Days 3 thru 7 - Boundary Awareness - Static Correction Zone**

Perform three or four training sessions per day, each lasting 10 – 15 minutes.

### **Important:**

- **Your cat MUST stay in a harness for training, to allow for any unpredictable response. The harness also gives you control to guide your cat to a "place of safety" within the Pet Area once warned or corrected by the Receiver Collar.**
- **If your cat attempts to leave the Pet Area, make sure he does not get past the Boundary Flags. Never let the cat past the Boundary Flags with or without the Receiver Collar on. If your cat thinks he can pass the Boundary Flags, training will take longer.**

**Goal:**

To teach your cat to associate the Static Correction with the position of the Static Correction Zone.

**Steps:**

1. Set the Receiver Collar to Level 2 – the lowest Static Correction level.
2. Fit the Receiver Collar as detailed on pages 6 and 7 of this guide.
3. Lead your cat to the Boundary Flags, but let him move through the Warning Zone to receive the small Static Correction.  
*Note: You may need to remove every other flag at this stage to encourage your cat to approach the Static Correction Zone.*
4. When your cat is corrected, urgently say “run away, run away” while pulling him into the Pet Area where the beep will stop. Praise and give affection to your cat.
5. If your cat ignores the Static Correction, first check the Receiver Collar fit to ensure good contact with the skin and try again. If he still ignores the correction, try gradually increasing the Correction Level as detailed on pages 4 and 5 of this manual until he reacts.
6. This should complete the association with the need to move away from the Boundary. If your cat has responded well to the previous steps, it should not be necessary to purposefully make your cat experience a Static Correction more than once or twice.

## **Days 8 thru 14 – Unleashed Observation**

Training sessions should start at 10 – 15 minutes, gradually increasing to one hour and more. Your cat is ready for this phase only when he normally avoids the Boundary Flag line. During this phase, watch your cat carefully.

### **Goal:**

To give your cat free run of the Pet Area.

### **Steps:**

1. Fit the Receiver Collar as detailed in on pages 6 and 7 of this guide.
2. Allow your cat freedom in your property while you act as a minder.
3. Observe your cat as he approaches the Boundary and receives warning beeps and Static Corrections on his own. If he responds by turning away from the Boundary and is not distressed, your cat is ready to move on to the final phase.

---

## **Days 15 thru 30 – Extended Observation**

For the first few weeks after training, check on your cat regularly, to ensure that all is well. Gradually reduce your checking until both of you have total freedom.

After you are satisfied your cat's training is complete, remove every other Boundary Flag every 4 days until all flags are removed. Save Boundary Flags for future use.

If you need to take your cat out of the Pet Area, remove the Receiver Collar and leave it in the Pet Area.

**Congratulations! You have now successfully completed the training program.**

## **Training Guide - Supervised Tie Out Method**

### **Goal:**

To train your cat to turn towards home every time he hears the warning beep from the Receiver Collar. Training should take about one week.

### **Setup:**

1. When training a cat, use a harness for attaching the tie-out.
2. Set the Receiver Collar to Correction Level 2 or 3 depending on the size and temperament of your cat. The higher the Correction Level, the stronger the Static Correction.
3. Cats must wear Receiver Collars much tighter than standard collars. Both Contact Points must touch the skin.
4. Purchase a 15' to 20' yard tie-out from any pet store.

### **Steps:**

1. Insert the yard anchor in the ground so the end of the tie-out reaches 1 to 2 feet past the Warning Zone.
2. To ensure your cat's well being, be sure there is shade and fresh water within the radius of the tie-out.
3. Attach your cat's harness to the tie-out.
4. Leave your cat in the tie-out area for 4 to 6 hours. Supervision is required for your cat's safety. Your supervision will monitor whether your cat has received a correction and whether your cat is learning the system.
5. Move the tie-out to different areas of the Boundary.
6. Continue the training for 3 days. During this period, your cat will learn to recognize the warning beep and to avoid the Static Correction Zone.

Supervise your pet in the yard for several weeks.

Leave the Boundary Flags in place for 3 weeks after your cat is trained. Then remove every other Boundary Flag every 4 days until they are all gone. Keep the Boundary Flags for future use. Regularly check the Receiver Collar and the fit against your cat's skin.

---

## Accessories

To purchase additional accessories for your PetSafe® Deluxe In-Ground Cat Fence™, contact the Customer Care Center at 1-800-732-2677. Some of the accessories may also be purchased at a retail store. Visit [www.petsafe.net](http://www.petsafe.net) to find a retailer near you.

Component	Part Number
Battery	RFA-188
Power Adapter for the Fence Transmitter*	300-006
Installation and Training DVD*	RFA-255
Replacement Collar*	RFA-254
Additional Receiver Collar	PIG00-11006
Additional Boundary Wire*	RFA-1
Additional Boundary Flags*	RFA-2
Wire & Flag Accessory Kit	PRFA-500
Fence Transmitter*	RFA-125
Lightning Protection Kit*	LP-4100-1
Wire Break Locator*	RFA-50

\* Only available through the Customer Care Center.

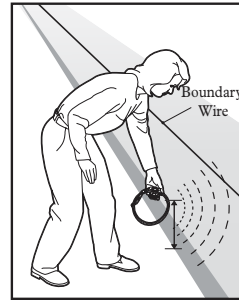
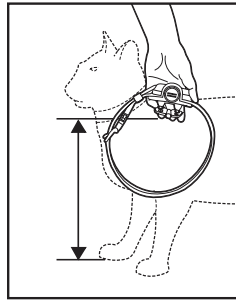
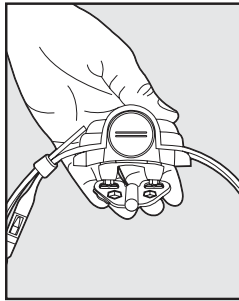
## Troubleshooting

<p><b>Receiver Collar is not beeping or correcting.</b></p>	<ul style="list-style-type: none"> <li>• Check battery to make sure it is installed properly.</li> <li>• Check that both lights are lit on the Fence Transmitter. If not, perform the “Short Loop Test.”</li> </ul>
<p><b>The Receiver Collar is beeping, but my cat is not responding to the Static Correction.</b></p>	<ul style="list-style-type: none"> <li>• Make sure that Static Correction Level is at 2 or above.</li> <li>• Test the Receiver Collar with the Test Light.</li> <li>• If the Test Light flashes, check the fit of the Receiver Collar.</li> <li>• Trim your cat’s fur where the Contact Points touch the neck.</li> <li>• Increase the Static Correction Level.</li> <li>• Repeat training steps to reinforce training.</li> </ul>
<p><b>The Receiver Collar has to be held on top of the Boundary Wire to activate.</b></p>	<ul style="list-style-type: none"> <li>• Replace battery.</li> <li>• Adjust Boundary Width Control knob clockwise to increase the distance from the Boundary Wire that the Receiver Collar activates. You can also adjust the Boundary Control Switch to another setting.</li> <li>• If using a Double Loop, make sure Boundary Wires are separated 3 to 5 feet.</li> <li>• If the Receiver Collar still has to be held on top of the Boundary Wire, perform the “Short Loop Test.”</li> </ul>

## Test Light Instructions

1. Set the Correction Level to 2 or above.
2. Hold the Test Light Contacts to the Contact Points.
3. Walk toward the Boundary Wire holding the Receiver Collar at your pet's neck level until the Test Light flashes.

*Note: If the Test Light does not flash, install a new battery and re-test. If Test Light still does not flash, contact the Customer Care Center at 1-800-732-2677.*



## Short Loop Test

The Short Loop Test is a simple test to determine if each component (Fence Transmitter, Receiver Collar and Boundary Wire) is functioning properly.

1. Disconnect the Boundary Wire and Ground Wire.
2. Cut approximately 10 feet of unused Boundary Wire and connect it to the Boundary Wire Terminals.
3. Spread the Boundary Wire out into a circle. Set the Boundary Control Switch to B.
4. Set the Boundary Width Control knob to 10 and the Static Correction Level to 2 or above.
5. If the Loop Indicator Light is not lit, then your Fence Transmitter is not functioning properly. Contact the Customer Care Center at 1-800-732-2677.
6. If the Loop Indicator Light is lit, disconnect one end of the Boundary Wire from the Boundary Wire Terminal.
7. If the loop alarm does not sound, the Fence Transmitter needs to be replaced. Contact the Customer Care Center at 1-800-732-2677.
8. If the loop alarm does sound, plug the Boundary Wire back into the Boundary Wire Terminal.
9. Hold the Receiver Collar next to the 10 foot length of Boundary Wire. The Receiver Collar should beep about 1 foot away from the Boundary Wire.
10. Hold the Test Light contacts to the Contact Points. The Test Light should flash when you hold the Receiver Collar close to the Boundary Wire.
11. If Receiver Collar does not beep and the Test Light does not flash, replace the battery in the Receiver Collar. If it still does not beep and the Test Light does not flash, contact the Customer Care Center at 1-800-732-2677.
12. If the Receiver Collar beeps, there may be a complete or partial break in the Boundary Wire.

## **Terms of Use and Limitation of Liability**

### **1. Terms of Use**

This Product is offered to you conditioned upon your acceptance without modification of the terms, conditions and notices contained herein. Usage of this Product implies acceptance of all such terms, conditions, and notices.

### **2. Proper Use**

This Product is designed for use with pets where training is desired. The specific temperament of your pet may not work with this Product. We recommend that you not use this Product if your pet is less than 6 lbs. or if your pet is aggressive. If you are unsure whether this is appropriate for your pet, please consult your veterinarian or certified trainer.

Proper use includes reviewing the entire Guide provided with your Product and any specific Caution statements.

### **3. No Unlawful or Prohibited Use**

This Product is designed for use with pets only. This pet training device is not intended to harm, injure or provoke. Using this Product in a way that is not intended could result in violation of Federal, State or local laws.

### **4. Limitation of Liability**

In no event shall Radio Systems® Corporation be liable for any direct, indirect, punitive, incidental, special or consequential damages, or any damages whatsoever arising out of or connected with the use or misuse of this Product. Buyer assumes all risks and liability from the use of this Product.

### **5. Modification of Terms and Conditions**

Radio Systems Corporation reserves the right to change the terms, conditions and notices under which this Product is offered.

## **Caution**

The PetSafe® Deluxe In-Ground Cat Fence™ is NOT a solid barrier. The system is designed to act as a deterrent to remind pets by Static Correction to remain in the boundary established. It is important that you reinforce training with your pet on a regular basis. Since the tolerance level to Static Correction varies from pet to pet, Radio Systems Corporation CANNOT guarantee that the system will, in all cases, keep a pet within the established boundary. Not all pets can be trained to avoid crossing the boundary! Therefore, if you have reason to believe that your pet may pose a danger to others or harm himself if he is not kept from crossing the boundaries, you should NOT rely solely upon the PetSafe Deluxe In-Ground Cat Fence to confine your pet. Radio Systems Corporation shall NOT be liable for any property damage, economic loss or any consequential damages, sustained as a result of any animal crossing the boundary.

---

## **Product Warranty**

Please register your product online at [www.petsafe.net](http://www.petsafe.net). All parts are covered under warranty for the life of this product. Labor is covered for the first year of ownership. Thereafter, there is a minimum service charge for the repair or replacement of the product. Misuse, loss, damage by pet or improper use or handling is not covered. PetSafe will not pay for loss of time, inconvenience, loss of use of your product or any incidental or consequential damage. Warranty void if product resold.

Please contact the Customer Care Center at 1-800-732-2677 if you need service or for help in troubleshooting and, if needed, to arrange a repair for your product (a service charge may apply.) Also, please visit our website [www.petsafe.net](http://www.petsafe.net) for Frequently Asked Questions and Troubleshooting Tips.

## **Perchlorate Battery**

Perchlorate Material – special handling may apply. See [www.dtsc.ca.gov/hazardouswaste/perchlorate](http://www.dtsc.ca.gov/hazardouswaste/perchlorate).



Radio Systems Corporation

10427 Electric Avenue

Knoxville, TN 37932

1-800-732-2677

[www.petsafe.net](http://www.petsafe.net)

400-845/2

Covered by US Patent 5,868,103; 6,637,376; 6,921,089;  
7,017,524; D531,117S. Other patents pending.

©Copyright 2007, Radio Systems Corporation