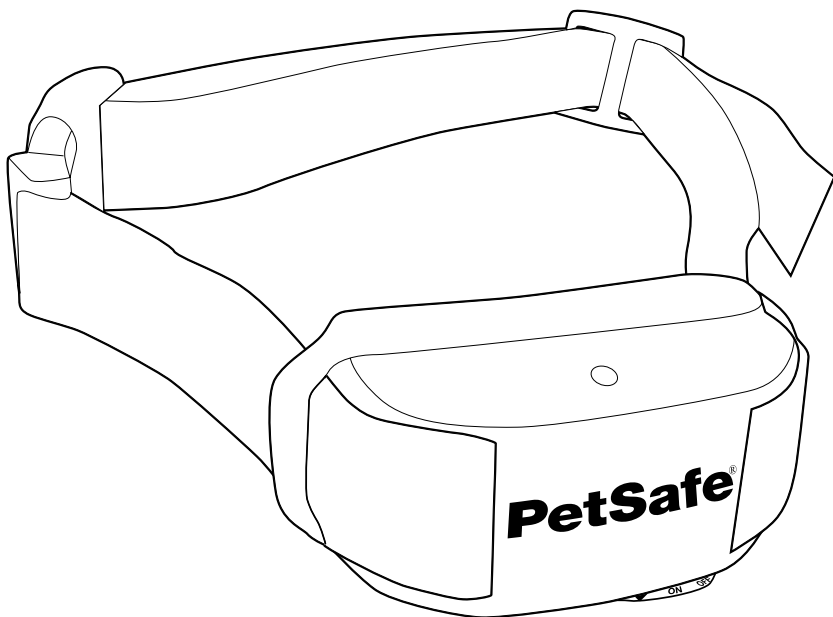


PetSafe® Vibration Bark Control Collar

Operating and Training Guide

Please read this entire guide before beginning.

PBC00-12789



Important Safety Information

Explanation of Attention Words and Symbols used in this guide



This is the safety alert symbol. It is used to alert you to potential personal injury hazards. Obey all safety messages that follow this symbol to avoid possible injury or death.

⚠️ WARNING

WARNING indicates a hazardous situation which, if not avoided, could result in death or serious injury.

⚠️ CAUTION

CAUTION, used with the safety alert symbol, indicates a hazardous situation which, if not avoided, could result in minor or moderate injury.

CAUTION

CAUTION, used without the safety alert symbol, indicates a hazardous situation which, if not avoided, could result in harm to your pet.

⚠️ WARNING

Not for use with aggressive dogs. Do not use this Product if your dog is aggressive, or if your dog is prone to aggressive behavior. Aggressive dogs can cause severe injury and even death to their owner and others. If you are unsure whether this product is appropriate for your dog, please consult your veterinarian or certified trainer.

CAUTION

Risk of skin damage. Please read and follow the instructions in this manual. Proper fit of the collar is important. A collar worn for too long or made too tight on the pet's neck may cause skin damage. Ranging from redness to pressure ulcers; this condition is commonly known as bed sores.

- Avoid leaving the collar on the dog for more than 12 hours per day.
- When possible reposition the collar on the pet's neck every 1 to 2 hours.
- Check the fit to prevent excessive pressure; follow the instructions in this manual.
- Never connect a lead to the electronic collar; it will cause excessive pressure on the contacts.
- When using a separate collar for a lead, don't put pressure on the electronic collar.
- Wash the dog's neck area and the contacts of the collar weekly with a damp cloth.
- Examine the contact area daily for signs of a rash or a sore.
- If a rash or sore is found, discontinue use of the collar until the skin has healed.
- If the condition persists beyond 48 hours, see your veterinarian.
- For additional information on bed sores and pressure necrosis, please visit our website.

These steps will help keep your pet safe and comfortable. Some pets are sensitive to contact pressure. You may find after some time that your pet is very tolerant of the collar. If so, you may relax some of these precautions. It is important to continue daily checks of the contact area. If redness or sores are found, discontinue use until the skin has fully healed.

The PetSafe® Vibration Bark Control Collar must be used only on healthy dogs. We recommend that you take your dog to a veterinarian before using the collar if he is not in good health.

The PetSafe® Vibration Bark Control Collar is not a toy. Keep it out of the reach of children. Use it only for its bark control purpose.

Thank you for choosing the PetSafe® brand. You and your pet deserve a companionship that includes memorable moments and a shared understanding together. Our products and training tools promote a lifestyle of protection, teaching, and love—essentials that influence memories for a lifetime. If you have any questions about our products or training your pet, please visit our website at www.petsafe.net or contact our Customer Care Center at 1-800-732-2677.

To get the most protection out of your warranty, please register your product within 30 days at www.petsafe.net. By registering and keeping your receipt, you will enjoy the product's full warranty and should you ever need to call the Customer Care Center, we will be able to help you faster. Most importantly, PetSafe® will never give or sell your valuable information to anyone. Complete warranty information is available online at www.petsafe.net.

Table of Contents

Components	4
Features	4
How the System Works	4
Key Definitions	5
Fit the Bark Control Collar.....	5
ON/OFF Battery Module	6
To Insert and Remove the Battery.....	6
To Test the Vibration Bark Control Collar.....	7
What to Expect During Use of the Vibration Bark Control Collar.....	7
Accessories	8
Regular Maintenance	8
Frequently Asked Questions	9
Troubleshooting	9
Customer Care International	9
Terms of Use and Limitation of Liability	10
FCC	10
Perchlorate Battery.....	11

“In a Tuskegee University study of adult shelter dogs wearing the PetSafe® Bark Control Collar for six 30-minute sessions over two weeks, we detected no long-term adverse effects, and all dogs dramatically reduced their barking by the second day.”

Dr. Janet Steiss and Dr. Caroline B. Schaffer
Tuskegee University

Components



**Vibration Bark
Control Collar**



**Battery
(PetSafe® RFA-188)**



Operating Guide

Features

- Uses vibration to interrupt the dog's barking
- Durable and waterproof
- Three color LED for good/low battery and test indicators
- On/Off position for longer battery life
- Easy to use
- Patented Perfect Bark™ technology ensures your dog's bark is the only sound that will cause the correction

How the System Works

The Vibration Bark Control Collar has two primary features designed to shorten the training phase and promote good behavior.

First, the bark control offers 10 combinations of vibration correction. When the dog barks vibration is delivered from one of the two Vibration Points. The duration of the vibration is random, which interrupts the dog's bark. When used according to instruction the Vibration Bark Control Collar safely reduces (and in most cases eliminates) nuisance barking.

Second, the Vibration Bark Control Collar includes Patented Perfect Bark™ technology. It uses both vibration and sound sensors (dual-detection) to discriminate each bark from other external noises. This ensures your dog's bark is the only sound that will cause the correction.

As a built-in safety feature, if your dog barks 15 times or more within a 1 minute 20 second period, the Bark Control Collar will automatically shut off for 1 minute.

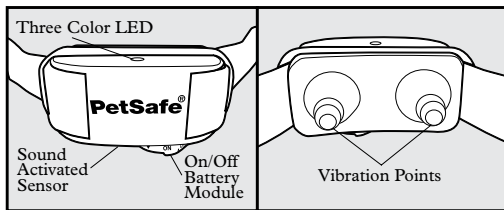
Key Definitions

Three Color LED: Shows good or low battery and indicates Test Mode.

Sound Activated Sensor: Detects the sound of your dog's bark.

Vibration Points: Deliver the Vibration Correction.

On/Off Battery Module: Turns the collar on and off.



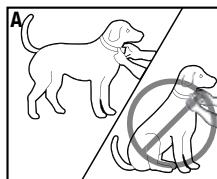
Fit the Bark Control Collar

Important: The proper fit and placement of your Bark Control Collar is important for effective operation. The Vibration Points must have direct contact with your dog's skin on the underside of his neck.

To assure a proper fit, please follow these steps:

1. Make sure that the battery is in the "OFF" position.
2. Have your dog standing comfortably (A).
3. Center the Vibration Points underneath your dog's neck, touching the skin (B).

Note: It is sometimes necessary to trim the hair around the Vibration Points to make sure that contact is consistent.

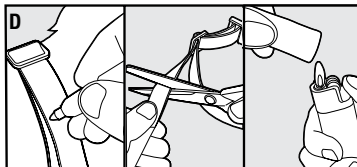
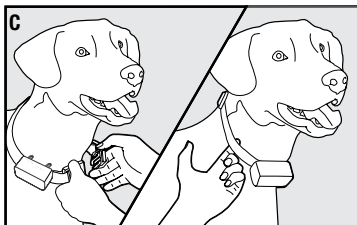


CAUTION Do not shave the pet's neck as this may increase the risk of skin irritation.

4. Check the tightness of the Bark Control Collar by inserting one finger between the strap and the dog's neck (C). The fit should be snug but not constricting.
5. Allow your dog to wear the collar for several minutes, then recheck the fit. Check the fit again as your dog becomes more comfortable with the Bark Control Collar.
6. Trim the collar as follows: (D)



- a. Mark the desired length of the collar with a pen. Allow for growth if your dog is young or grows a thick winter coat.
- b. Remove the Bark Control Collar from your dog and cut off excess.
- c. Before placing the Bark Control Collar back onto your dog, seal the edge of the cut collar by applying a flame along the frayed edge.



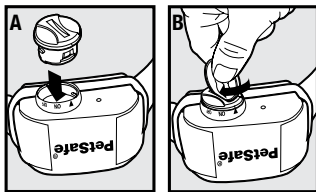
ON/OFF Battery Module

The PetSafe® Vibration Bark Control Collar is packaged with the battery module installed in the “OFF” position. To activate the collar, use a coin to turn the Battery Module counter clockwise until the arrow lines up with the “ON” position. If the collar is not going to be used on the dog immediately leave it in the “OFF” position.

To Insert and Remove the Battery

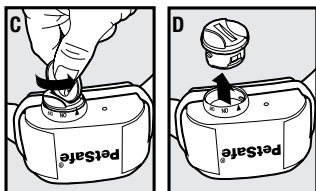
Note: Do not install the battery while the Bark Control Collar is on your dog.

1. Align the line on the battery with the triangle on the Bark Control Collar (A).
2. Use a **coin** to turn the battery clockwise until the line points to the “On” position if you are putting it on the dog or the “Off” position if it is not being put on the dog right away (B).
3. To remove the battery, turn the battery counter-clockwise using a coin (C, D). DO NOT attempt to cut into or pry open the battery. Be sure to discard the used battery properly.



This Bark Control Collar utilizes a replaceable PetSafe® battery (RFA-188). This unique battery is designed to make battery replacement easier and increase water protection.

A replacement PetSafe® battery (RFA-188) can be found at many retailers. Contact the Customer Care Center or visit our web site at www.petsafe.net to locate a retailer near you.



Battery Life

Average battery life is 3 to 6 months, depending on how often your dog barks. However, due to greater use during your dog’s training, your first battery may not last as long as replacement batteries. To conserve battery life, turn to the “OFF” position when the Bark Control Collar is not in use.

Three Color LED

The three color LED indicator shows good or low battery and indicates Test Mode. Good battery equals 1 flash every 5 seconds with Green LED. Low battery equals 3 flashes every 5 seconds with the Red LED. If there are no LED lights it is time to change the battery.

LED Function and Response Table

Function	LED Light Response
Unit is on	Green LED Light flashes once every 5 seconds
Low battery condition	Red LED Light flashes 3 times every 5 seconds
Delivering vibration	Red LED Light flashes for each correction
Test Mode	Orange LED flashes

To Test the Vibration Bark Control Collar

1. Begin with the Collar in the OFF position.
2. Turn to the ON position until the LED shows Orange.
3. Immediately turn to the OFF position after seeing the Orange LED.
4. Turn to the ON position. The LED will flash Orange and you are now in test mode.
5. Blow into the microphone and the Orange LED will flash to indicate that the microphone is working.
6. Scratch lightly between the Vibration Points to indicate the vibration is working.
7. If the LED light does not flash and there is no vibration, ensure that the battery is properly installed, and/or replace the battery. If there is still no response, contact the Customer Care Center at 1-800-732-2677.
8. Turn OFF to end the test mode. The test mode will also time out after 30 seconds and resume normal operation.

What to Expect During Use of the Vibration Bark Control Collar

Important: Do not leave your dog alone the first few times he receives a Vibration Correction.

Place the Bark Control Collar properly on your dog and wait nearby until he barks. Most dogs will understand very quickly that the Bark Control Collar is disrupting their urge to bark and will relax and stop barking. Because the Vibration Correction from the Bark Control Collar may be surprising or startling at first, some dogs may bark more at the initial correction.

On rare occasions, a dog may get into a bark-correction-bark-correction cycle. If this happens, reassure your dog with calm, soothing tones. As your dog relaxes, he will understand that if he becomes quiet, he will not receive any more Vibration Corrections. The small minority of dogs that have this reaction will only have it the first time they wear the Bark Control Collar.

You should notice a reduction in your dog's barking within the first couple of days that he wears the Bark Control Collar. At this point, it is important to remember the learning process is still not complete. Dogs will "test" this new learning experience and will increase their attempts to bark. This usually occurs during the second week a dog wears the Bark Control Collar. If this does occur, remain consistent and do not alter your use of the Bark Control Collar. You must place the Bark Control Collar on your dog in every situation when you expect him to be quiet. If your dog is not wearing the Bark Control Collar, he may resume barking and his learning would suffer a setback.

To Prevent Skin Irritation From Occurring

CAUTION

Risk of skin damage. For comfort, safety and effectiveness of this product, please ensure that you check the fit of your pet's collar frequently. If any skin irritation is observed, discontinue the use of the collar for a few days. If the condition persists beyond 48 hours, see your veterinarian.

Do not attach a leash to the Bark Control Collar. This can result in pulling the Vibration Points too tightly against your pets neck. You may put a separate non-metallic collar on your dog's neck and attach a leash. Do use a harness for attaching a leash and/or tags while using the Bark Control Collar.

Please refer to page 2 for additional information.

Accessories

To purchase additional accessories for your PetSafe® Vibration Bark Control Collar, contact the Customer Care Center or visit our website at www.petsafe.net to locate a retailer near you.

Component	Part Number
Battery	RFA-188

Regular Maintenance

- Wash the Vibration Points of the collar weekly with a damp cloth. (*Note: Turn to the “Off” position before cleaning the Vibration Points.*)
- Check your dog’s neck for irritation and wash neck weekly.

Frequently Asked Questions

Will another dog's bark set off the Bark Control Collar?	<ul style="list-style-type: none">• No. Patented Perfect Bark™ technology ensures your dog's bark is the only sound that will cause the Vibration Correction.
Will the Vibration Bark Control Collar work for my dog?	<ul style="list-style-type: none">• The Bark Control Collar is safe and effective for all breeds and sizes of dogs.
Can I attach a leash to the Bark Control Collar?	<ul style="list-style-type: none">• No. This can result in pulling the Vibration Points too tightly against your dog's neck. Attach a leash to a separate, non-metallic collar or a harness, making sure the extra collar does not put pressure on the Vibration Points.

Troubleshooting

My dog keeps barking (does not respond to the Vibration Correction).	<ul style="list-style-type: none">• Tighten the Bark Control Collar and/or trim your dog's hair where the Vibration Points touch his neck to ensure good skin contact.• Replace the battery.• If your dog still does not respond, contact the Customer Care Center.
The green LED light stopped flashing and there is no red light.	<ul style="list-style-type: none">• Ensure that the battery is properly installed.• Replace the battery.• If the green LED light is still not flashing, contact the Customer Care Center.

Customer Care International

USA & Canada - Tel: 800-732-2677

Monday - Friday 8 AM - 8 PM / Saturday 9 AM - 5 PM

Australia - Tel: 1800 786 608

Monday - Friday 7:30 AM - 5 PM

New Zealand - Tel: 0800 543 054

Monday - Friday 10:30 AM - 7 PM

This product has the benefit of a limited manufacturer's warranty. Details of the warranty applicable to this product and its terms can be found at www.petsafe.net and/or are available by sending a stamped addressed envelope to PetSafe® Ltd. Redthorn House, Unit 9, Chorley West Business Park, Ackhurst Road, Chorley, Lancashire PR7 1NL, United Kingdom.

Terms of Use and Limitation of Liability

1. Terms of Use

This Product is offered to you conditioned upon your acceptance without modification of the terms, conditions and notices contained herein. Usage of this product implies acceptance of all such terms, conditions, and notices.

2. Proper Use

This Product is designed for use with pets where training is desired. The specific temperament of your pet may not work with this product. We recommend that you not use this product if your pet is aggressive. If you are unsure whether this is appropriate for your pet, please consult your veterinarian, certified trainer or contact our Customer Care Center or visit our website at www.petsafe.net.

Proper use includes reviewing the entire Operating and Training Guide provided with your product and any specific Caution statements.

3. No Unlawful or Prohibited Use

This Product is designed for use with pets only. This pet training device is not intended to harm, injure, or provoke. Using this product in a way that is not intended could result in violation of Federal, State or local laws.

4. Limitation of Liability

In no event shall Radio Systems® Corporation be liable for any direct, indirect, punitive, incidental, special or consequential damages, or any damages whatsoever arising out of or connected with the use or misuse of this Product. Buyer assumes all risks and liability from the use of this Product.

5. Modification of Terms and Conditions

Radio Systems Corporation reserves the right to change the terms, conditions and notices under which this Product is offered.

FCC

This device complies with part 15 of the FCC Rules. Operation is subject to the following two conditions:

(1) This device may not cause harmful interference, and (2) this device must accept any interference received, including interference that may cause undesired operation.

CAUTION: Modification or changes to this equipment not expressly approved by Radio Systems® Corporation may void the user's authority to operate the equipment.

NOTE: This equipment has been tested and found to comply with the limits for a Class B digital device, pursuant to part 15 of the FCC Rules. These limits are designed to provide reasonable protection against harmful interference in a residential installation. This equipment generates, uses, and can radiate radio frequency energy and, if not installed and used in accordance with the instructions, may cause harmful interference to radio communications. However, there is no guarantee that interference will not occur in a specific installation. If interference does occur to radio or television reception, which can be determined by turning the equipment off and on, the user is encouraged to try to correct the interference by one or more of the following measures:

- Reorient or relocate the receiving antenna.
- Increase the separation between the equipment and the receiver (if applicable).
- Connect the equipment to an outlet on a circuit different from that to which the receiver is connected.
- Consult customer care, the dealer, or an experienced radio/TV technician for help.

This Class B digital apparatus complies with Canadian ICES-003.

Cet appareil numérique de la classe B est conforme à la norme NMB-003 du Canada.

Perchlorate Battery

Perchlorate Material – special handling may apply. See www.dtsc.ca.gov/hazardouswaste/perchlorate.

Radio Systems® Corporation
10427 Electric Ave.
Knoxville, TN 37932
1-800-732-2677
www.petsafe.net
400-1210/1

©2010 Radio Systems Corporation